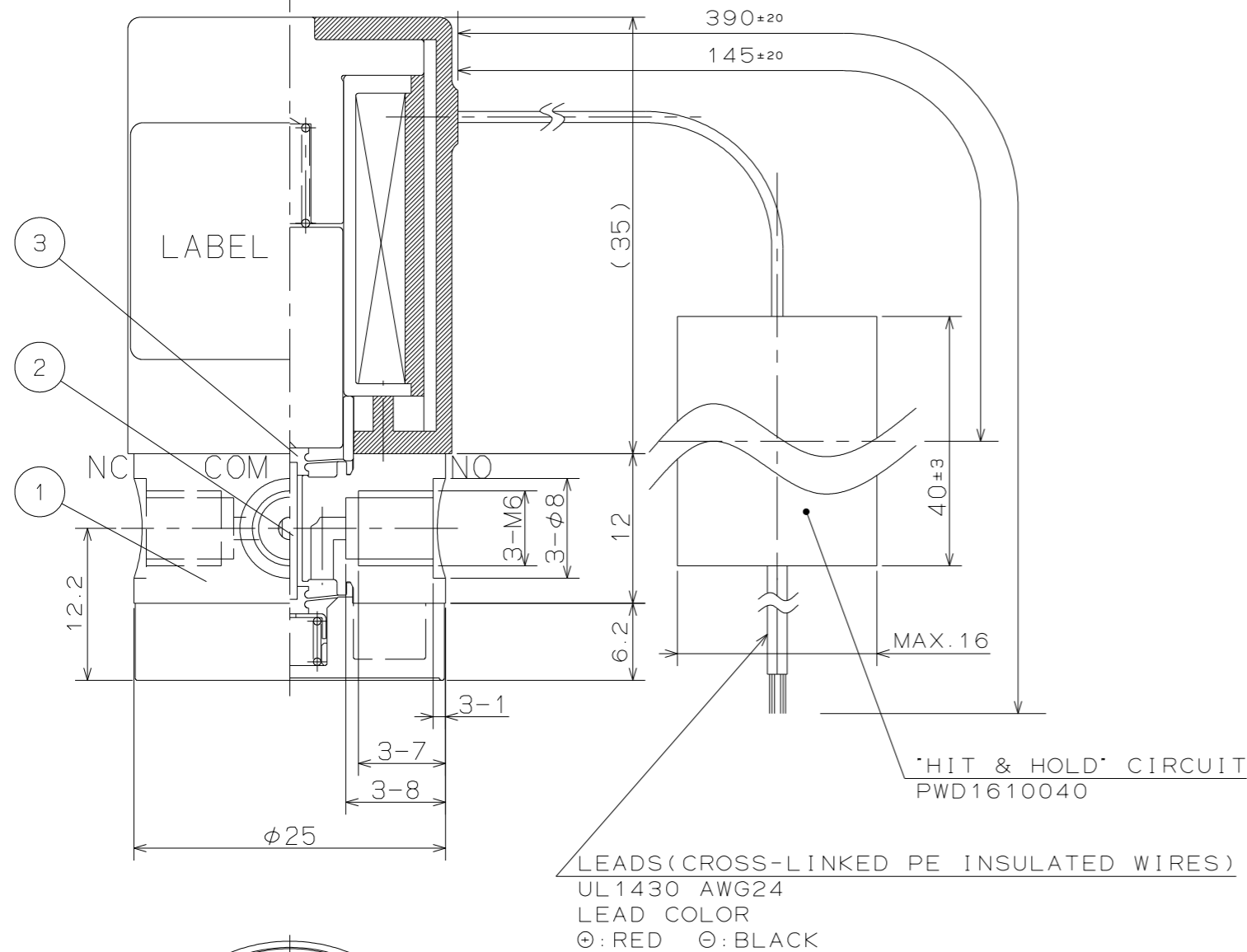


FOR REFERENCE ONLY



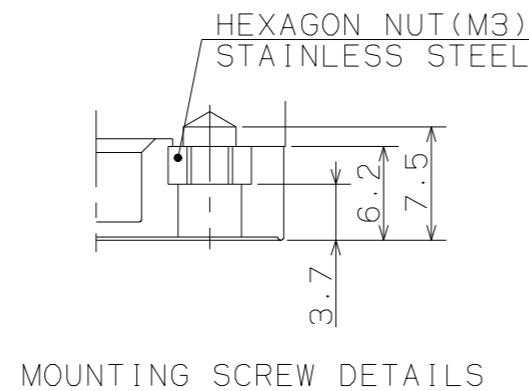
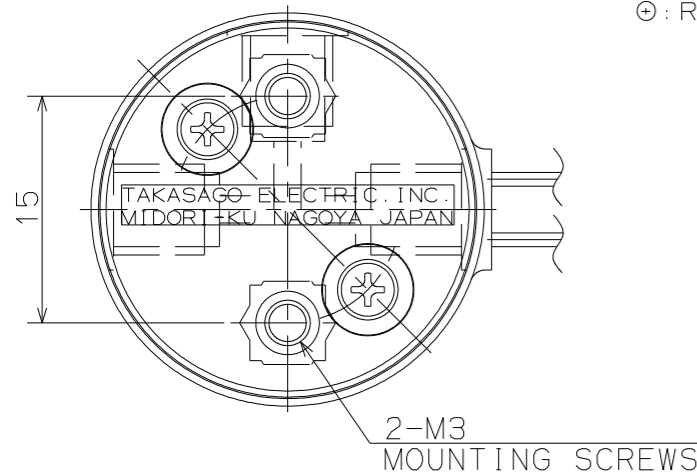
SOLENOID VALVE

SPECIFICATIONS for MODEL MTV-3-NM6-24

ORIFICE DIAMETER	:	1.6mm
PORT CONNECTION	:	M6
OPERATING PRESSURE RANGE	:	COM -90 ~ 200kPa {-675mmHg ~ 2bar}
		NC, NO 0 ~ 50kPa {0 ~ 0.5bar}
FLUID MEDIA	:	FLUIDS CHEMICALLY COMPATIBLE WITH MATERIALS BELOW
MEDIA TEMPERATURE RANGE	:	△ 5 ~ 60℃
AMBIENT TEMPERATURE RANGE	:	△ 5 ~ 60℃
RATED VOLTAGE	:	△ 12VDC, 24VDC
POWER CONSUMPTION	:	4.4W(INRUSH)* 0.7W(HOLDING)
INSULATION CLASS	:	CLASS B
DIELECTRIC STRENGTH	:	1500VAC FOR 60s

NOTE
THIS PRODUCT CARRIES A CIRCUIT THAT CONTROLS THE VOLTAGE BY TIMER. IT IS NOT RECOMMENDABLE TO RUN THE ON/OFF CYCLES AT OVER 1.7Hz(DUTY CYCLE 50%). THE LEAD WIRES SHOULD BE CONNECTED IN ORDER TO OPERATE THE VALVE PROPERLY : THE RED LEAD TO POSITIVE AND THE BLACK LEAD TO NEGATIVE.

* : INRUSH TIME IS 100ms±10% FROM ENERGIZING



WETTED MATERIALS

SYM.	DATE	DESCRIPTION	PART NO.	PART NAME	MATERIAL	REQD.	NOTE
△			3	DIAPHRAGM	PFA	2	
△			2	STEM	Al ₂ O ₃	1	
△	'18-10-4	MEDIA AND AMBIENT TEMPERATURE RANGE CHANGED 0℃~50℃. 12VDC ADDED.	1	VALVE BODY	PFA	1	
REVISION			PART NO.	PART NAME	MATERIAL	REQD.	NOTE
SCALE	APPROVED	CHECKED	DRAWN		SOLENOID VALVE		DRAWING NO
2/1		K.abe	K.Watanabe		MTV-3-NM6-24		10069-00-E
A 3							