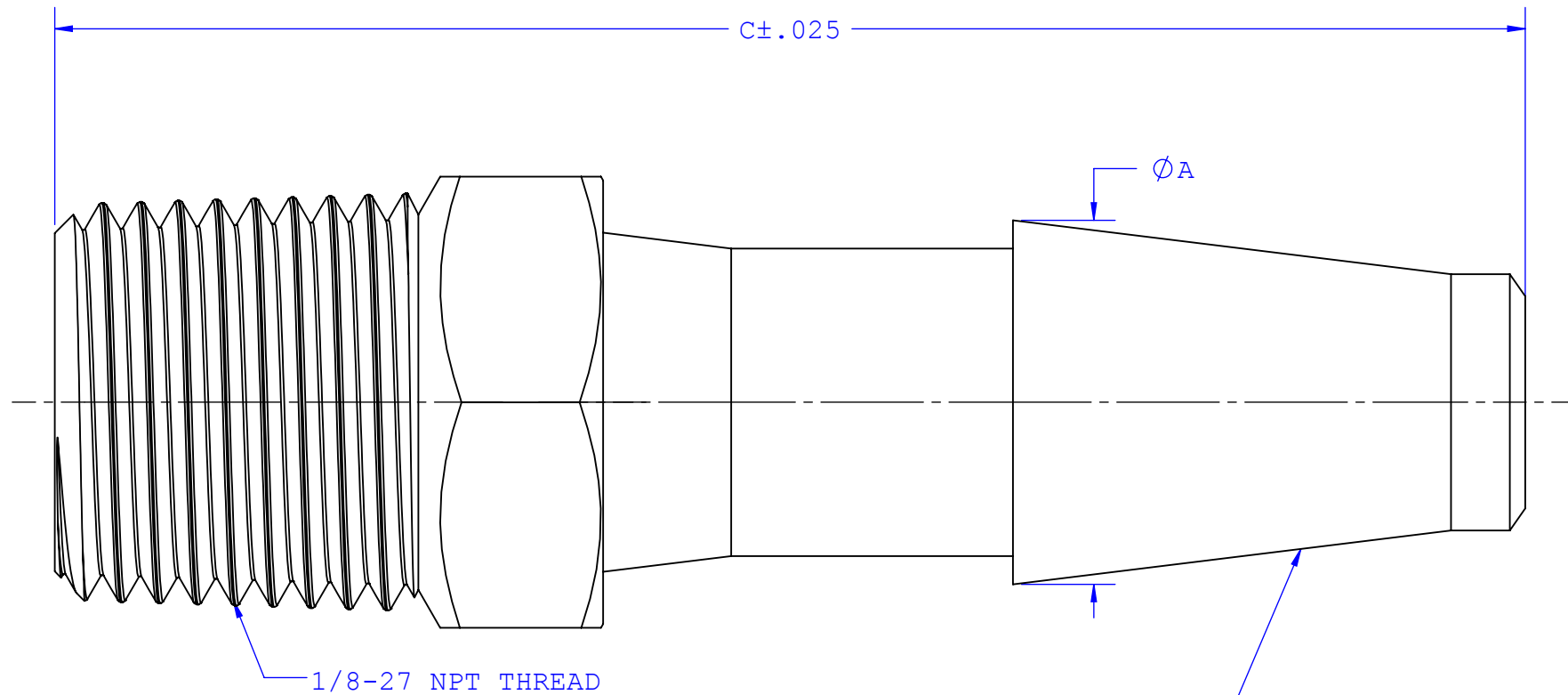
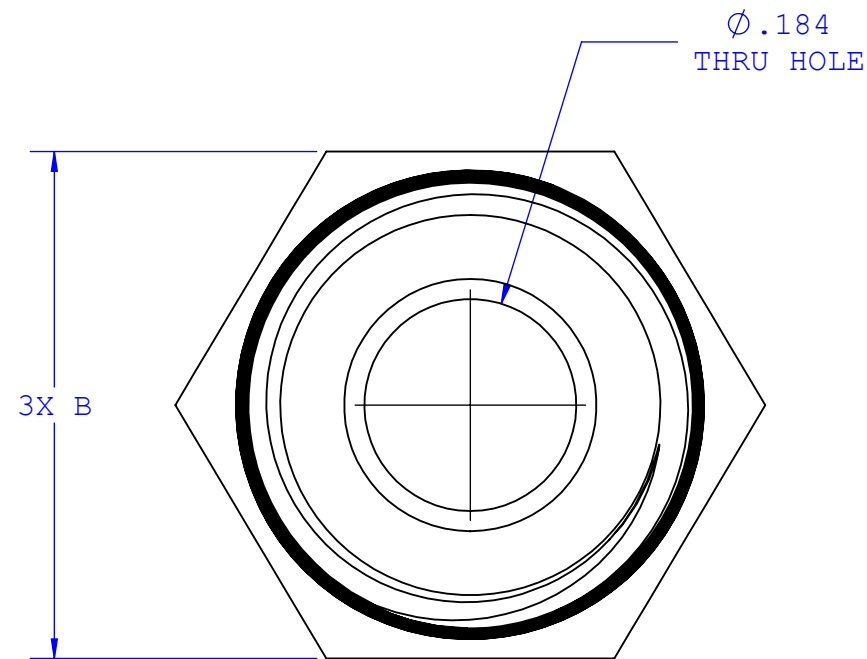
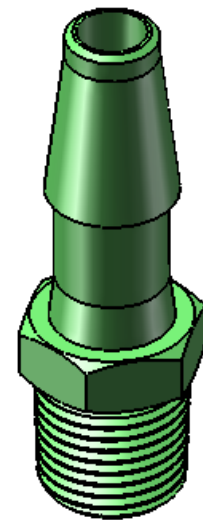


NOTES: FOR ADDITIONAL DETAILS, PLEASE CONTACT VP PRODUCT DEVELOPMENT
DIMENSIONS MARKED  ARE CONTROL DIMENSIONS

REVISIONS			
REV.	DESCRIPTION	DATE	APPROVED
A	ECO #0005	07-08-99	
B	CO 027 Drafting Update	10-04-05	Rick C.
C	ECO 090-J1A OAL needs to be Material Specific	08-22-08	Rick C.



INSTRUMENT QUALITY PART.
NO PARTING LINE PERMITTED
ON THIS CONICAL SURFACE



Dimension	Material Specific Tolerances							
	Acetal	Nylon	PP	ABS	PC	PVC	Polysulfone	J1A
A	.355	.355	.355	.355	.355	.355	.355	.348
B	.433	.433	.433	.433	.433	.433	.433	.425
C	1.435	1.435	1.435	1.435	1.435	1.435	1.435	1.406
D								
E								
F								

UNLESS OTHERWISE SPECIFIED DIMENSIONS ARE IN INCHES TOLERANCES ARE: FRACTIONS DECIMAL ANGULAR ± ± ± 1° .XX .XX .XXX .XXX .XXX .XXXX .XXXX ±.001 DO NOT SCALE DRAWING		VALUE PLASTICS, INC			
DRAWN BY: randy.sakurada		DATE: 10/14/2008		PART NUMBER: 1860	
ENGINEERING MGR: R. Cairns		SIZE: B	SCALE: NTS	VER: 1007454	DWG. NO. 1007454
				DESCRIPTION: 1/8-27 NPT Thread with 7/16" Hex to Classic Series Barb, 1/4" (6.25mm) ID Tubing	
				REV: C	
				SHEET: 1 OF 1	
© 2008 VALUE PLASTICS, INC					

FOR REFERENCE ONLY